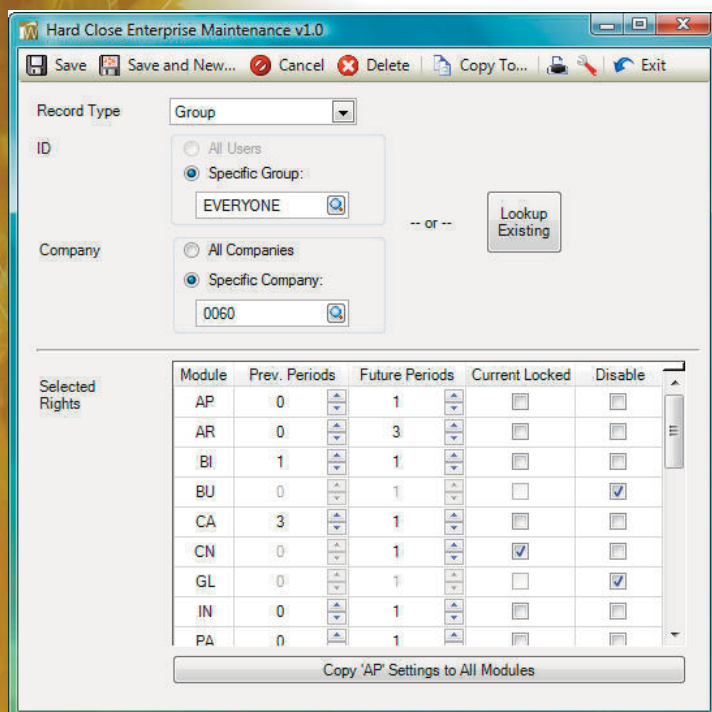


HARD CLOSE ENTERPRISE

FOR MICROSOFT DYNAMICS SL ACCOUNTING SYSTEMS



Developed by IronWare Technologies for Microsoft Dynamics SL, Hard Close Enterprise is an enhanced version of our popular Hard Close Standard Edition. Hard Close Enterprise enables organizations to establish and secure posting activities by restricting data entry to a defined range of periods, including past, current and future. Hard Close Enterprise also defines and manages posting rights and restrictions for users, groups, modules or the entire company. Protecting Dynamics SL users against potentially disastrous postings, resulting in a domino effect throughout the entire system, Hard Close Enterprise provides security for more than 40 entry points (screens), where users can inadvertently, or by accident, access and post to

incorrect periods. Hard Close Enterprise and Hard Close Standard are specifically designed to lock the door on data mishaps, providing the security and compliance your organization requires.



With Hard Close Enterprise, users, groups and modules are now controlled and secure for the entire organization.

(Note: Must have registered Solomon Customization Manager Module utilizing VBA to run this utility.)

Features

Compliant:
Secure:
Compatible:
Affordable:

Benefits

Satisfies SEC reporting requirements
Eliminates "posting to the wrong period" errors
Available for Dynamics SL v 6.5 & 7.0
Cost: HC Enterprise \$995, HC Standard \$695

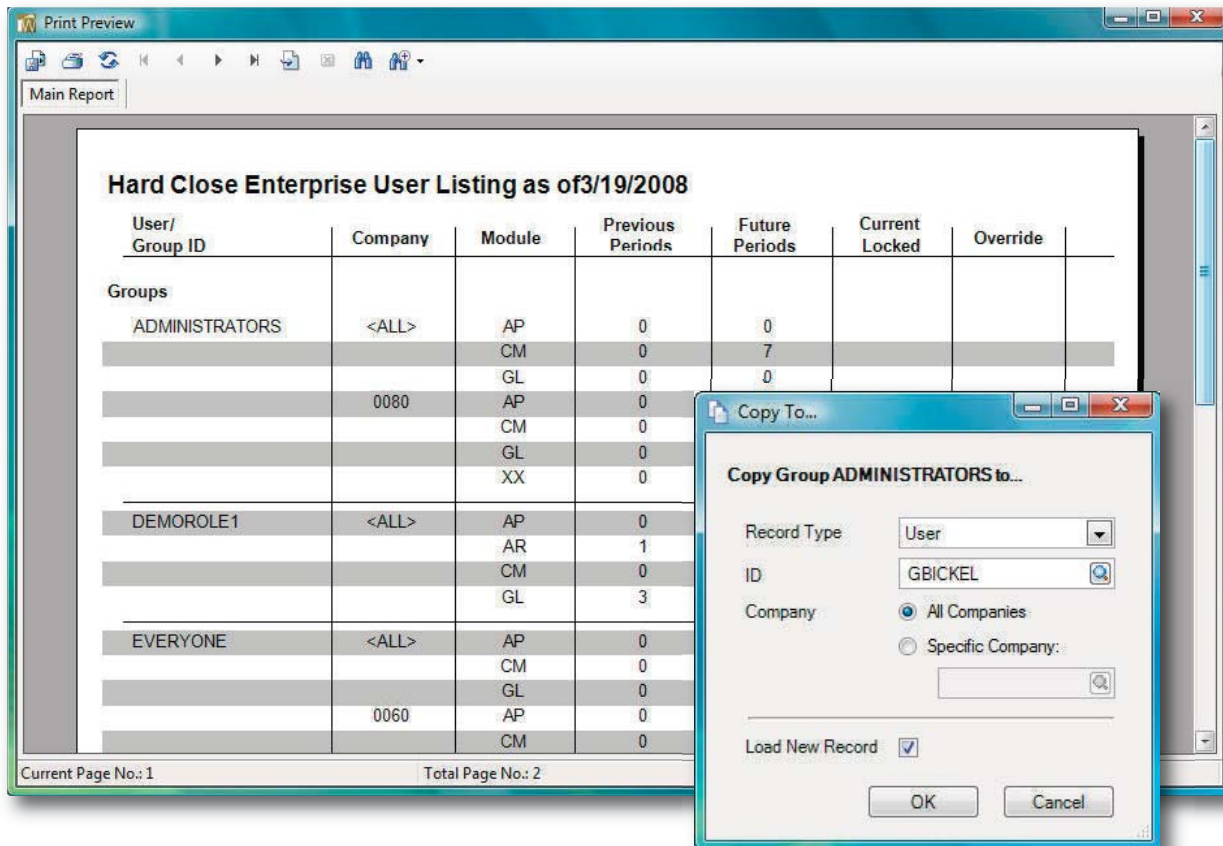
Upgrade promotions are available for Hard Close Standard customers that wish to move to the Enterprise edition. Contact IronWare Technologies for more information.

www.ironware.com

877-IRONWARE



HARD CLOSE ENTERPRISE BY IRONWARE TECHNOLOGIES



Hard Close Enterprise provides great new reporting and copy features designed to assist users with system auditing and automation.

Features Matrix by Application

Available Features	Dynamics SL v. 7.0	Dynamics SL v. 7.0 FP1	IronWare Hard Close Standard	IronWare Hard Close Enterprise
Restrict Postings to GL		●	●	●
Restrict Postings to Past Periods		●	●	●
Restrict Postings to Future Periods			●	●
Restrict Postings to 13 Modules			●	●
Set Posting Restrictions by User			●	●
Set Posting Restrictions by User Groups				●
Set Posting Restrictions by Company				●
Set Posting Restrictions by Module				●
Restrict Posting to Current Period				●
Copy Rights to other Users/Groups				●
Report showing defined Hard Close rights				●