

Integrated Project Management and Accounting

Spitfire Web Based Project Management

Integrated Microsoft Dynamics SL Accounting

“Control, Communicate, Collaborate, & Document”

Sample Documents

Submittal
Submittal Package
RFI
Change Order Request
Change Order
Correspondence
Issue
Subcontract
Subcontract CO
Transmittal
Drawings
Milestones
Approvals
Pay Request
Meeting Minutes
Punch list
Field Report
Field Directive
Task
Inspection
Budget
Bid
Bid Request
Compliance Notification
Permit
Safety Notice
Team Message
Forecast

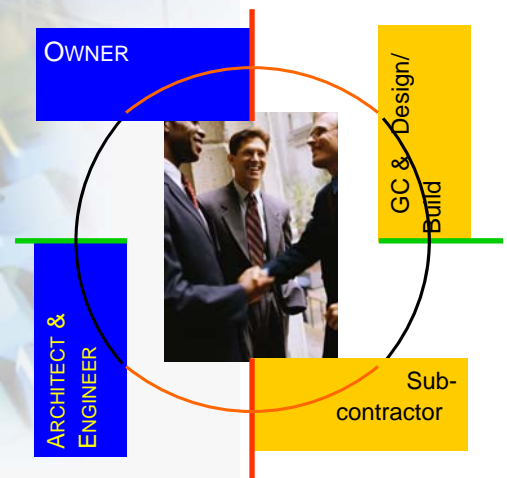
- Manage Risk
- Reduce Communications Errors & Delays
- Improve Efficiency

Document Control

- Manages the full spectrum of Project Management documents
- Fully customizable documents
- Unlimited user-defined document types

Routing & Automatic Workflow

- Route documents either by Web, E-mail, or Fax.
- Web based document collaboration allows for direct on-line sharing of documents with full security.
- E-mail base routing includes Automatic Reply Handling so that responses to e-mails automatically update the Project Management system.
- Unlimited number of either parallel or serial document routes
- Role based routing rules automatically deliver documents to the correct project participants
- Fully automated workflow scripts allow you to have the system automatically trigger documents and notices that route to project participants at appropriate events and times.

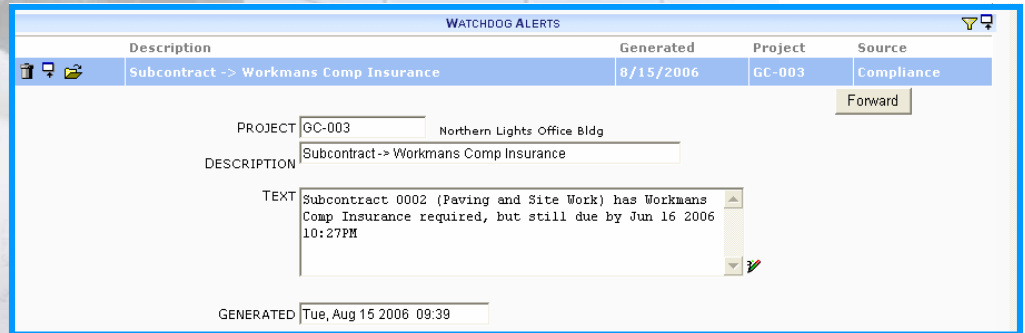


Integrated Project Management and Accounting

Watchdog Alerts

Fully automated alerting engine for Due Dates, Statuses, Routing, Financial condition, Compliance, etc. Web or E-mail alerts to any and all project participants

- Automatic Out of Compliance Notification alerts directly to Subcontractors
- Alerting Hierarchy provides for automatic escalation of alerts if condition persists.



Description	Generated	Project	Source
Subcontract -> Workmans Comp Insurance	8/15/2006	GC-003	Compliance

Forward

PROJECT: GC-003 Northern Lights Office Bldg

DESCRIPTION: Subcontract-> Workmans Comp Insurance

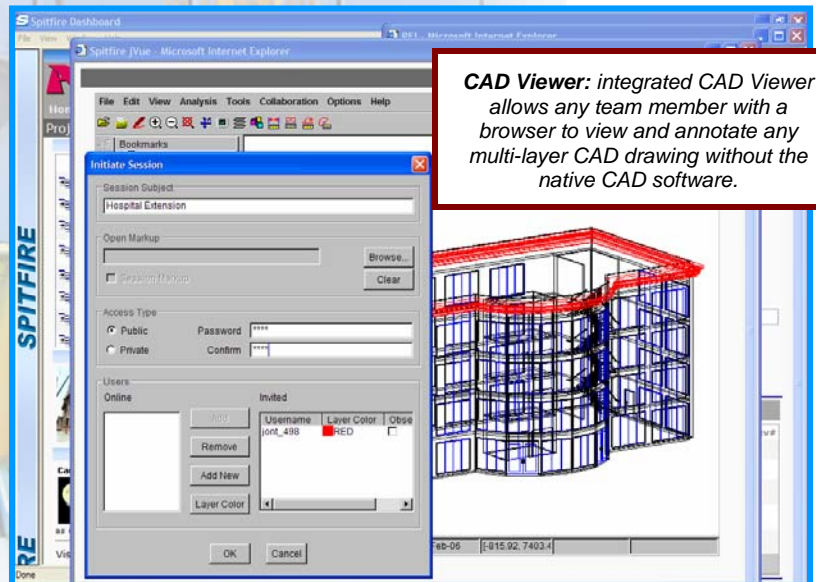
TEXT: Subcontract 0002 (Paving and Site Work) has Workmans Comp Insurance required, but still due by Jun 16 2006 10:27PM

GENERATED: Tue, Aug 15 2006 09:39

Document Imaging & File Management

Spitfire provides system-wide integrated document imaging capability. This provides an easy way to file, share, manage, and track anything from CAD drawings to scanned invoices and pay requests, or any other document.

- On-line web based collaborative file viewing and annotation
- Single image scan and batch scan capability
- Full text OCR for searching any document based upon embedded text.
- Any project or accounting related document may be easily scanned and attached to a transaction or cataloged independently for future retrieval.
- Supports all CAD files, Word, JPEG, PDF, XLS, e-mail, or virtually any other file type
- Check-in/Check-out version control with full audit trail.
- Annotator includes text, highlights, sticky notes, audio, freehand scribble, pointers, images, stamps, rulers, hyperlinks and more.



CAD Viewer: integrated CAD Viewer allows any team member with a browser to view and annotate any multi-layer CAD drawing without the native CAD software.

Integrated Project Management and Accounting

Project Dashboard

Project Documents -Track and review all the Project related communications from one centralized location

Project Contacts - All team members, including Builder/Owner, Subcontractor, Architects, Engineers, and Employees are listed for immediate access.

Site Progress Photos – Full archive of progress photos.

Site Condition Log – Display current site conditions and creates site condition log

Key Performance Indicators -Track and review all the Project related financials at-a-glance

Cost Analysis with Drill down – See summary project performance data or drill down to the transaction level detail, and on to the source document

Project Files – Everything from scanned invoices to CAD files

PROJECT DOCUMENTS

Type	Doc No	Description	Date	Due	Author	To	Status	Priority
Bid	1001	Changed Lateral Size and Spec's	9/21/2006	9/13/2006	Spitfire Construction	Lightning Ventures, Inc.	Open	FYI
Cert & Appr	1002	Routing of FO Cable per change in Laterals	9/21/2006	9/12/2006	Spitfire Construction	Riviera Electric	Open	FYI

PROJECT CONTACTS

Name	Company	Phone	Role	Contact's Project
Jon Taffler	Spitfire Construction	(914) 273-0808	Project Staff	
Jason Sunderson	Able Electric Corp	(555) 555-1212	Owner	2004-8970
Chris Demo	Spitfire Construction	(203) 992-3232	Project Staff	
Nick North	Northern Lights	(555) 555-1212	Subcontractor	COHO-2004-098
Coho Asphalt and Concrete	Coho Asphalt	(555) 555-1212	Subcontractor	HVAC-8765
Universal HVAC Specialties	Universal HVAC Specialties	(555) 555-1212	Subcontractor	HVAC-8765
Spitfire Construction	Spitfire Construction	(914) 273-0808	Project Assistant	
Nick York	York Architects, Inc.	(973) 452-9585	Architect	NT-04-897

SITE PHOTOS

SITE CONDITIONS

KPIs

Category	Value
Original Contract	\$750,000
Approved CO	\$0
Original SC	\$34,300
Approved SCO	\$1,200
Revised SC	\$34,300
Pending SCO	\$1,200
Approved SC-PR	\$3,250
Original Budget	\$575,000
Estimate At Completion	\$575,000
Actual & Commit to Date	\$47,708
AR Summary	\$13,800
UNBILLED	\$0
Project Cash Flow	\$15,500
AP Cash Out	\$13,800
Less Retention	\$1,550
CASH IN	\$150
AP Cost to Date	\$13,126
Less Open AP	\$13,126
Less Retention	\$0
AP CASH OUT	\$0
Other Cash Out	\$19,601
NET CASH FLOW	(\$19,451)

User Dashboard

Brings together all information for a user

- User Sensitive System-Wide Menu
- In-Box for all active documents
- Watchdog Alerts automatically presented to the user
- Project level security displays only users assigned projects

USER MENU (EXPANDS ON DEMAND)

Description	DocNo	Type	Project	Due	Originator	Priority
FO conduit connection details	12345	Submittal	GC-003	5/15/2005	Demo Employee	High
AP Voucher: Ferguson Enterprises	000941	AP Vouchers & Adjustments	GC-003	5/16/2005	Demo Employee	High
Electrical Changes per City Requirements	1	Project Change Order	GC-003	5/16/2005	Demo Employee	FYI
Upgrade - Moved to PCO 1	1	Subcontract Change Order	GC-003	5/16/2005	Demo Employee	FYI
Changes for PCO 1-2: Sub: Additional work to meet	2	Subcontract Change Order	GC-003	5/17/2005	Demo Employee	FYI
8 Scanned Invoices	2	Scanned Invoice	-	5/17/2005	Demo Employee	Medium
Coho Asphalt 000018	000018	Requisition/PO	GC-003	5/23/2005	Demo Employee	Low
Adventure Works 000004	000004	Requisition/PO	GC-003	5/23/2005	Demo Employee	Low
Forecast 1	1	Forecast	GC-003	5/26/2005	Demo Employee	FYI

PROJECT LIST

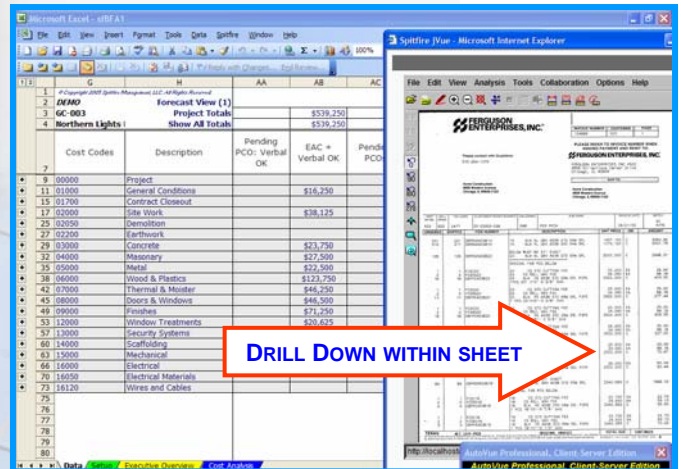
Project Name	Description	Generated	Project	Source
GC-003 Northern Lights Building	Submittal is overdue	12/21/2004	GC-003	Action Overdue
GC-004 Residential Apartment	Living Wage for County Changed	1/15/2005	GC-003	Kim Abercrombie
GC-005 Office Building Construction	Delivery of HVAC unit delayed	1/15/2005	GC-003	Elizabeth Keyser-Rubble
GC-006 Seattle City Hall Renovation	Submittal is overdue	1/12/2005	GC-003	Action Overdue
SC-001 Plumbing Retrofit Bldg 350	AP Vouchers & Adjustments has been closed	2/23/2004	GC-003	Doc Closed
SC-004 A Datum Plumbing Renovation	RFI is overdue	2/24/2004	GC-003	Doc Overdue

WATCHDOG ALERTS

Integrated Project Management and Accounting

Advanced Budgeting & Forecasting

Tightly XML linked Excel based Budgeting & Forecasting provides full project info with drill-down detail, all in a familiar and flexible Excel based format



Project Costing Setup

- Revenue recognition capabilities automatically compute and post revenue at the project or cost code level based on rules you establish or percent complete information that may be automatically calculated, or entered
- Unlimited user-defined account categories (cost types) directly tied to G/L
- Ability to view data online from a project summary level, drilling down to transaction details
- Integration with Payroll, Financial Accounting, Material Management, and Field Service Management, for single-point data entry
- Powerful data transfer tools for integration with products such as Microsoft Excel
- Key fields are password protected to a segment level for entry or update
- User-defined columns on pre-defined reports
- Numerous segmented, user-defined codes for flexibly controlling Project ID, Work Breakdown Structure, Billing Rates, Account Categories, etc. – manage project information the way you want
- Powerful Screen Template function lets you pre-load any screen with as much data as you'd like, eliminating repetitive data entry
- Flexible cost code setup allows for up to 6 levels of sub-totals on reports
- Virtually unlimited user-defined pricing methods

Tightly Integrated to Microsoft Dynamics SL Accounting

Spitfire was architected from the ground up to integrate tightly to Microsoft Dynamics SL without compromises. Unlike many interfaces which are attempted with independent Project Management and Accounting systems *AFTER* they have been developed independently, Spitfire was designed directly to, and natively utilizes Dynamics SL data.

If you "look under the hood" of aftermarket interfaces, you'll see many compromises – replicated data, duplicate maintenance functions, entry constraints, reliance on certain manual procedures, background processes to push data back and forth – not things that you want as part of an integrated system.

With Spitfire you get complete, clean, tight, system-wide integration – no compromises, no excuses.