

E-BANKING

Projects

Manufacturing

As electronic banking services become increasingly widespread, you'll want your Microsoft Dynamics SL system to provide you with the tools needed to take advantage of this technology. The modules available in the *eBanking Suite* will help you reduce your costs through automation, along with providing improved security and fraud protection. They include:

- A/P Electronic Funds Transfer (APEFT)
- Wire Transfer Plus
- Positive Pay (aka Safe Pay)
- A/R Electronic Funds Transfer (AREFT)
- Lockbox Processing

A/P Electronic Funds Transfer

The APEFT module provides automatic transfer of funds from your Accounts Payable checking account(s) to your vendors' bank accounts. This ACH (Automated Clearing House) Credit system will eliminate the time consuming process of printing, signing, stuffing and mailing A/P checks. What had previously taken hours, now takes only minutes. Whether streamlining payments to your vendors, reimbursing employees for their expenses, or paying your taxes, APEFT is the solution.

Wire Transfer Plus

Nearly identical in operation to *APEFT*, *Wire Transfer Plus* will accommodate you where your need is to make foreign payments or pay your vouchers via wire instead of using the ACH system. *Wire Transfer Plus* will create both domestic and foreign wires. Additionally, (depending on your bank's capabilities) *WTP* also supports Bank Drafts, Corporate Checks and CTX and other out-sourced banking functions.

Positive Pay

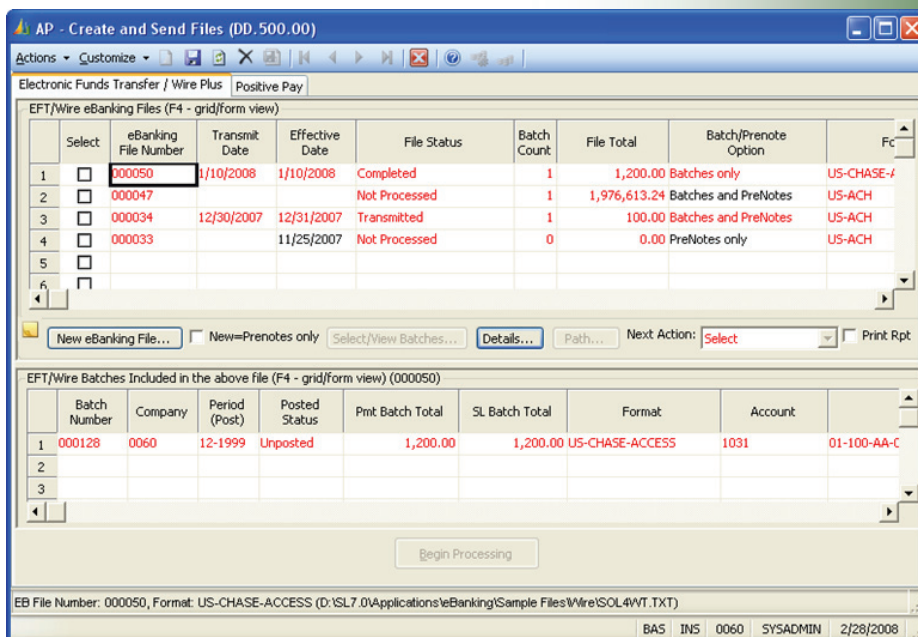
Reduce your exposure to unauthorized paper checks through Positive Pay. This check fraud protection feature is required by a rapidly growing number of banks across the U.S. As part of your normal check printing process, Positive Pay will produce an electronic file, and then transmit it to your bank. The bank will only honor the checks that are identified in the electronic file.

When sending EFT, Wire or Positive Pay files, simply select the batch(s) - appropriate files are created and transmitted to your bank.

Designed For Microsoft Dynamics SL™ Financial Series:

Modules included in the eBanking Suite:

- APEFT
- Wire Transfer Plus
- Positive Pay
- AREFT
- Lockbox Processing



A/R Electronic Funds Transfer

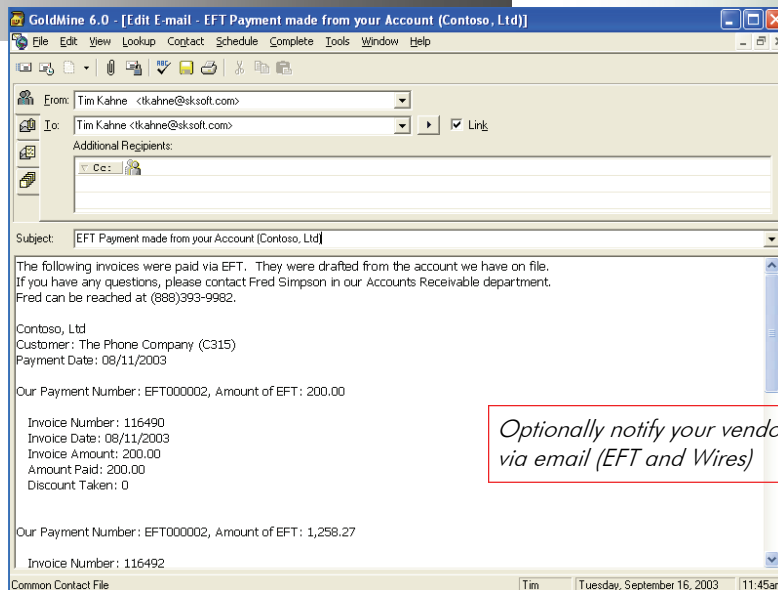
Seamlessly integrated with your Accounts Receivable module, AREFT gives you the ability to debit a customer's account electronically. Use this ACH debit system to create and send an electronic file to your bank with instructions to make a withdrawal from your customers' account and deposit the funds into your account. If you have recurring accounts receivable or pre-arranged contracts, then AREFT is just what you're looking for.

Lockbox Processing

If you are using a lockbox service to collect checks from your customers, this module will process the electronic file that you receive from your bank. Where included remittance information is complete, cash receipts will be automatically applied to invoices. For those cash receipts where the matching document is questionable, use the payment application workbench to match the cash receipt to the appropriate invoice. In any case, since you don't have to enter each of the transactions individually, you will save time and money through better efficiency and security. Even if a lockbox is not being used, this module can be used to speed up payment application processing.

Automatic eMail Notification

For APEFT, Wire Transfer Plus, and AREFT, Internet email notification can be set up to automatically inform your vendors and customers of their EFT payment or debit. Detailed voucher or invoice information, along with totally configurable email text, subject, from/to and other options, provides for custom crafted messages sent to your vendors and customers. Where you are paying a large list of vouchers for a vendor, that list may be provided as an attachment to the email.



Optionally notify your vendors or customers via email (EFT and Wires)

eBanking Suite highlights:

- Browser communications
- Email notification
- Archiving
- Multi-batch payment selection
- Many "out-of-the-box" Positive Pay formats
- Unlimited file formats
- Lockbox formats designated by ID
- Lockbox payment application workbench

Flexible Configuration/ Workflow

New with eBanking Suite version 8, payment methods may be assigned by vendor and changed at the voucher level. Multiple batches may then be created as part of a single payment selection process. New for APEFT & Wire Transfer, payment selection batches can be optionally routed through Computer check printing or Manual check batches.

Multi-Company/ Multi-Account

Whether you use a single database or multiple databases for multiple companies, the eBanking Suite can handle the job. Payment selection and application for single or multiple accounts within a single company or multiple companies is fully supported.

Multiple File Formats

File formats are included to fully support US, Canadian and virtually any country or bank format. This growing list of out-of-the box, easily-configurable formats supports the EFT applications, Positive Pay, and Lockbox. For use in the US, APEFT and AREFT create NACHA standard files. This standard insures that funds transfer will work seamlessly with all US banks. Check our website at www.sksoft.com for an up-to-date list of supported formats. We'll build your format if it's not there.

Flexible Communications

The *eBanking Suite* streamlines processing through various communication options, beginning with full browser/FTP supports. The process of creating and sending the eBanking file to your bank is just a few mouse clicks away. Additionally, if your bank requires login and/or complicated interaction, scripting support can automate the process. Scripting will also support situations where your bank requires you to use their communications software.

BUSINESS ISSUES	HOW THIS FLEXIBLE PRODUCT CAN HELP
I would like to out-source the processing of our cash receipts.	Use Lockbox Processing with a Lockbox service Your bank or other 3 rd party service can provide a mailbox for your customers to send their remittances. The lockbox service will then process the cash receipts, make a deposit for you, and send you an electronic file that Lockbox Processing will use to record receipts in your Microsoft Dynamics SL system.
Vendors and Customers would like to receive notification of their EFT credit or debit.	Use the E-mail notification feature or mail/fax remittance For E-mail notification simply set the Vendor- or Customer-specific e-mail options. After the EFT or Wire file has been transmitted, automatically send e-mail notifications – with one click of the mouse!
My Customer will allow us to debit their account to make progress payments.	AREFT is an ACH Debit system Set your customer up to allow this functionality for some or all of their invoices. Your bank will withdraw funds from their account and deposit them in yours!
Can I mark a Sales Order to be paid via AREFT?	YES! Because AR EFT uses terms codes to identify a document as an EFT document, sales orders may be marked accordingly
Do I have to put my AREFT transactions in a separate batch?	NO! An AR batch can have a mix of invoices ... some to be collected via EFT, some to be collected traditionally.
My company is in Canada. Can I still pay my vendors electronically?	YES! Wire Transfer Plus uses the same methodology as APEFT, but uses each bank's specific wire format rather than ACH (US standard). Check our website for your bank's format. If it's not there, we'll create it for you.
We require 2 signers on checks over \$10,000. How can I do that with APEFT?	Multiple Levels of Approvers! You can designate a list of approvers who can approve amounts at multiple levels, then specify how many approvers are required to release payments above those levels.

eBanking Suite highlights (cont'd):

- Multiple checking accounts
- Multi-company
- State and Federal tax payments
- Flexible EFT summarization options
- Pre-notification with automatic approval (US)
- Multiple user-defined Header/Trailer records
- Security on EFT files and scripts
- Optional Account and Amount approvals
- User configured CCD+ support (US)

Available on these Microsoft Dynamics SL Versions:
2011, 7.x, 6.x



**SANDLER • KAHNE
SOFTWARE**

11140 Rockville Pike, #299
North Bethesda, MD 20852

Voice: (301)963-7300 x117
Fax: (301)560-4984
Email: sales@sksoft.com
Web: www.sksoft.com

© Sandler-Kahne Software, Inc.
2000-2011 all rights reserved
All features/functions mentioned within this document are subject to change. This document is for information purposes only. Sandler Kahne Software makes no warranties, express or implied, in this document.
Revised 09/07/2011



SANDLER • KAHNE
SOFTWARE



Demo Videos

Data Sheets

Testimonials

ONLINE @ www.sksoft.com