

Bring your data to life

Connect to hundreds of data sources, and visualize all your data with live dashboards and reports. Then share insights across your organization to fuel intelligent action.



Power BI

What is Power BI?

Power BI is a business analytics service that delivers insights to enable fast, informed decisions. It empowers you to:

- Transform data into **stunning visuals** and share them with colleagues on any device
- Visually explore and **analyze data**—on-premises and in the cloud—all in one view
- Collaborate on and share **customized dashboards** and interactive reports
- Scale **across your organization** with built-in governance and security
- Make you **Dynamics 365 Business Central** data available as a data source in Power BI
- **Build powerful reports** with Business Central data on the state of your business

How does it work with Dynamics 365 Business Central?

Getting insights into your Business Central data is easy with Power BI and the Business Central content packs. **Power BI retrieves your data** and then builds an out-of-the-box dashboard and reports based on that data.

You must have a valid account with Dynamics 365 Business Central and with Power BI.

The **Dynamics 365 Business Central content pack** provides a dashboard with key financial data over time, such as earnings versus expenses, operating margin, cash cycle, and more. Once you download the Power BI Desktop, **you can create your own Power BI reports.**

Power BI is most powerful with **Dynamics 365 Business Central** as your ERP, integrated with Office 365, Outlook, and CRM. It compliments other tools like [Microsoft Flow](#) and [PowerApps](#).

[Watch Overview](#)



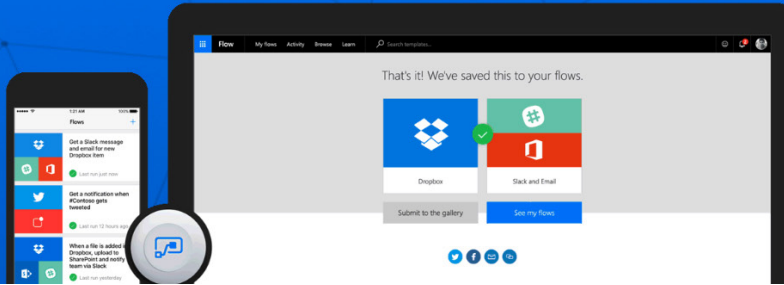
Enterprise Resource Planning
Cloud Solution Provider

Work less, do more

Create automated workflows between your favorite apps and services to get notifications, synchronize files, collect data, and more



Find a template or connector to start with



What is Microsoft Flow?

Microsoft Flow is a cloud-based software tool that allows employees to create and automate workflows across multiple applications and services without the need for developer help. It turns repetitive tasks into multi-step workflows. To create an automated flow, the user specifies what action should take place when a specific event occurs. There are a wide variety of templates for creating workflows that look like this:

Create a quick note for important emails

By Microsoft
Used 5410 times

Trigger a flow with a Power BI data-driven alert

By Microsoft
Used 7743 times

Send approval email when a new item is added

By Microsoft
Used 1073 times

What are examples of flows of automated tasks that apply to my business?

- Better track and manage your time and expenses
- Stay connected to what's happening in the office through notifications
- Streamline your service calls with automatic creation of service tickets
- Stay on top of consulting work by reporting your activities
- Optimize your sales efforts with instant addition of notes or creation of new contacts

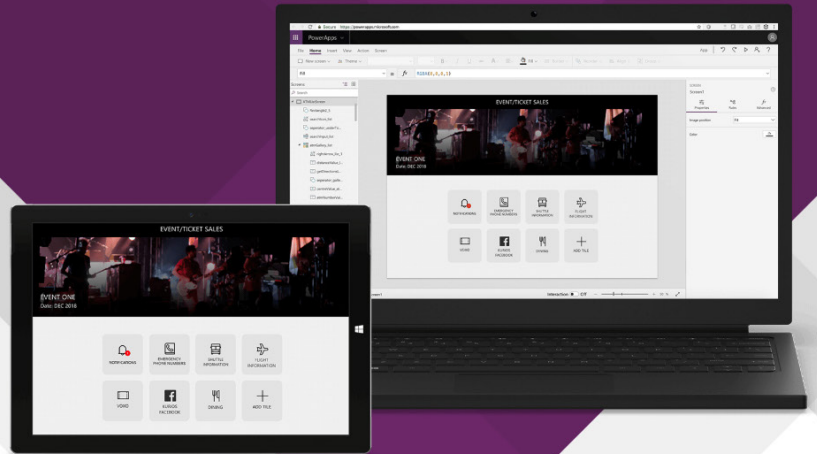
Once a flow is built, it can be managed on the desktop or through an app on a mobile device. Flow integrates with your Microsoft software, including [Dynamics 365 Business Central](#), Office 365, and [PowerApps](#), and is made more powerful when part of an ERP system that includes [Power BI](#).



PowerApps

Apps that mean business

Easily build the business apps you need and extend or customize the apps you already use.



What is PowerApps?

PowerApps is Microsoft’s way of enabling non-developers to build functional applications without writing any code. It comes with sample applications as a starting point for building your own apps, or as a tool for learning how PowerApps works.

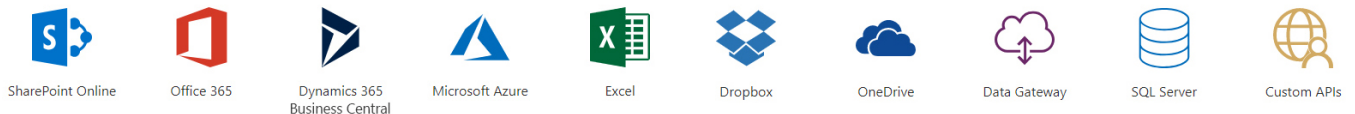
You can build apps fast with a point-and-click approach to app design. You can choose from a large selection of templates or start from a blank canvas. Your apps easily connect to data and use Excel-like expressions to easily add logic. You can publish your app to the web, iOS, Android, and Windows 10. It’s that easy.

Developers will like the pro-developer extensibility, which is natively built into the platform. This allows them to seamlessly extend app capabilities using Azure Functions or using custom connectors to connect to custom or legacy systems.

How is data stored and what data can we use?

With Common Data Service for Apps built in, you get a powerful data service with rich customization, business logic, and security capabilities. Your data is stored in a standard format through the common data model so it’s ready to go and easy to use.

Data is at the core of every app. We make it easy to get your data into your apps with more than 200 connectors for many popular cloud services and even your on-premises data. Here are some of the tools and software with which PowerApps connects data:



PowerApps is made most powerful when you have **Dynamics 365 Business Central** as your ERP system and you utilize all its integration capabilities with Office 365, Outlook, Excel, CRM, and the other two tools in the Microsoft Power Platform: [Power BI](#) and [Microsoft Flow](#).



Enterprise Resource Planning
Cloud Solution Provider